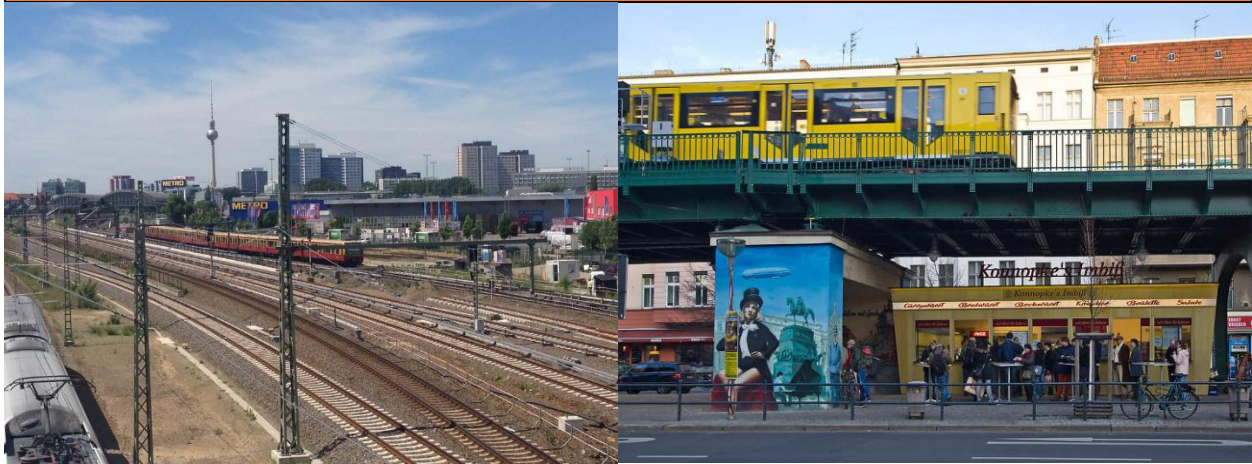


Name here

Option G Urban Environments – Recognising Siting Factors



Task 1 – Using the embedded Google Map on ibgeographypods, try to identify as many siting factors as possible for the settlement of Berlin.

Siting Factor	Evidence from map

Topography [edit]

Union and Germany



Treptowers and Berliner Fernsehturm at the river Spree

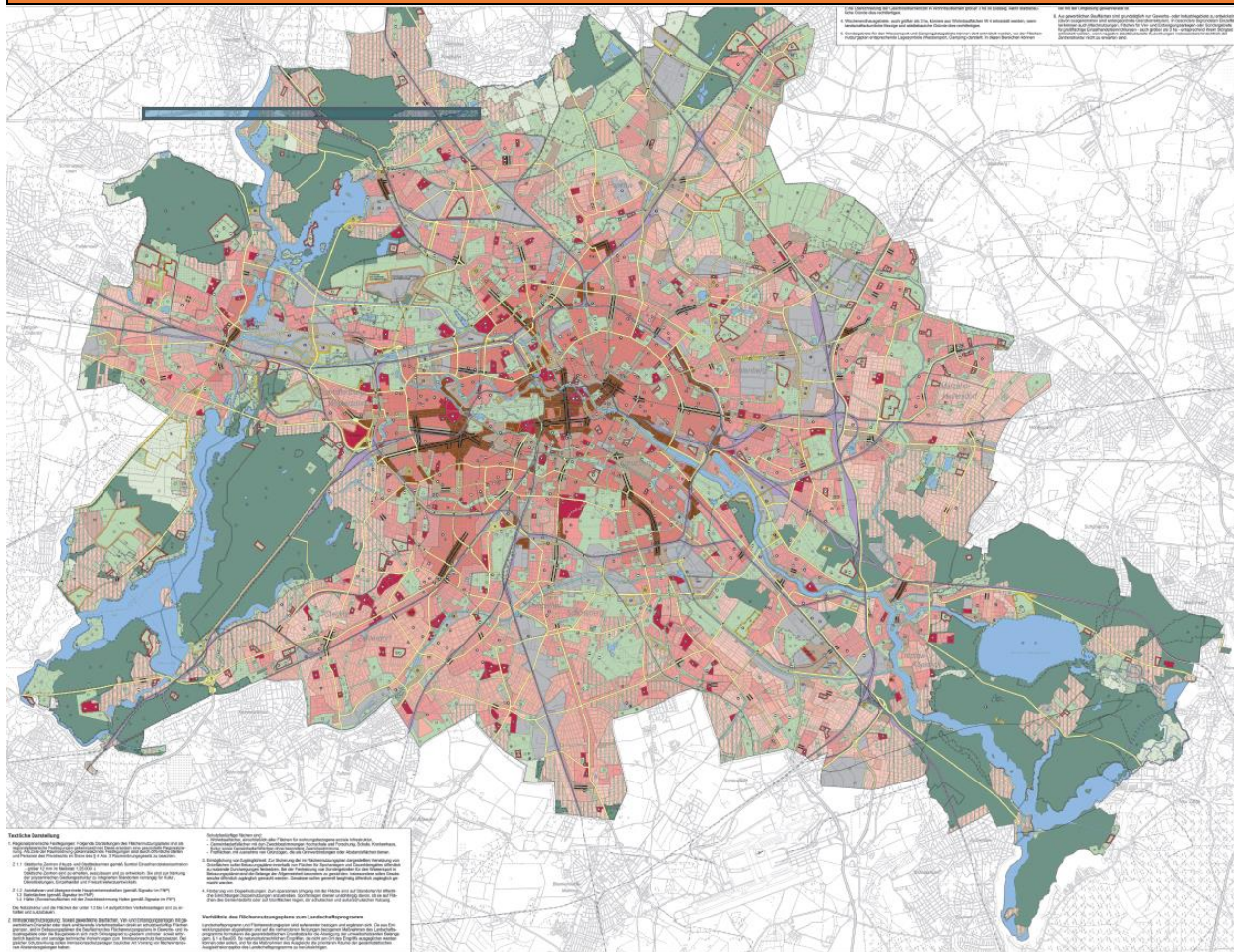
Berlin is located in northeastern [Germany](#) in an area of low-lying marshy woodlands with a mainly flat topography. It is part of the vast [Northern European Plain](#) that stretches from northern [France](#) to western [Russia](#). The Berlin–Warsaw *Urstromtal* (ice age glacial valley), between the low [Barnim Plateau](#) to the north and the [Teltow Plateau](#) to the south, was formed by meltwater flowing from ice sheets at the end of the last [Weichselian glaciation](#). The [Spree](#) follows this valley now. In Spandau, Berlin's westernmost borough, the Spree empties into the river [Havel](#), which flows from north to south through western Berlin. The course of the Havel is more like a chain of lakes, the largest being the [Tegeler See](#) and [Großer Wannensee](#). A series of lakes also feeds into the upper Spree, which flows through the [Großer Müggelsee](#) in eastern Berlin.^[7]

Substantial parts of present-day Berlin extend onto the low plateaus on both sides of the Spree Valley. Large parts of the boroughs, [Reinickendorf](#) and [Pankow](#) lie on the Barnim Plateau, while most of the boroughs—[Charlottenburg-Wilmersdorf](#), [Steglitz-Zehlendorf](#), [Tempelhof-Schöneberg](#), and [Neukölln](#)—lie on the Teltow Plateau.

The borough of Spandau lies partly within the Berlin Glacial Valley and partly on the Nauen Plain, which stretches to the west of Berlin. The highest elevations in Berlin are the [Teufelsberg](#) and the [Müggelberge](#) in the city's outskirts, and the [Kreuzberg](#) is the highest elevation in the centre. While the latter measures 66 m (217 ft) above sea level, the former are both about 115 m (377 ft) above sea level. The Teufelsberg is actually an artificial hill composed of a pile of rubble from the ruins of World War II.^[8]

Name here

IB DP Geography - Describing Land Use in Berlin



Task 2 – Using the hyperlinked land use map of Berlin on [ibgeographypods](http://www.ibgeographypods.org), describe the land use patterns in Berlin and use the Borough map to the right to help you. Ensure you make reference to: Residential, Commercial, Retail, Concentrations, Green areas...