

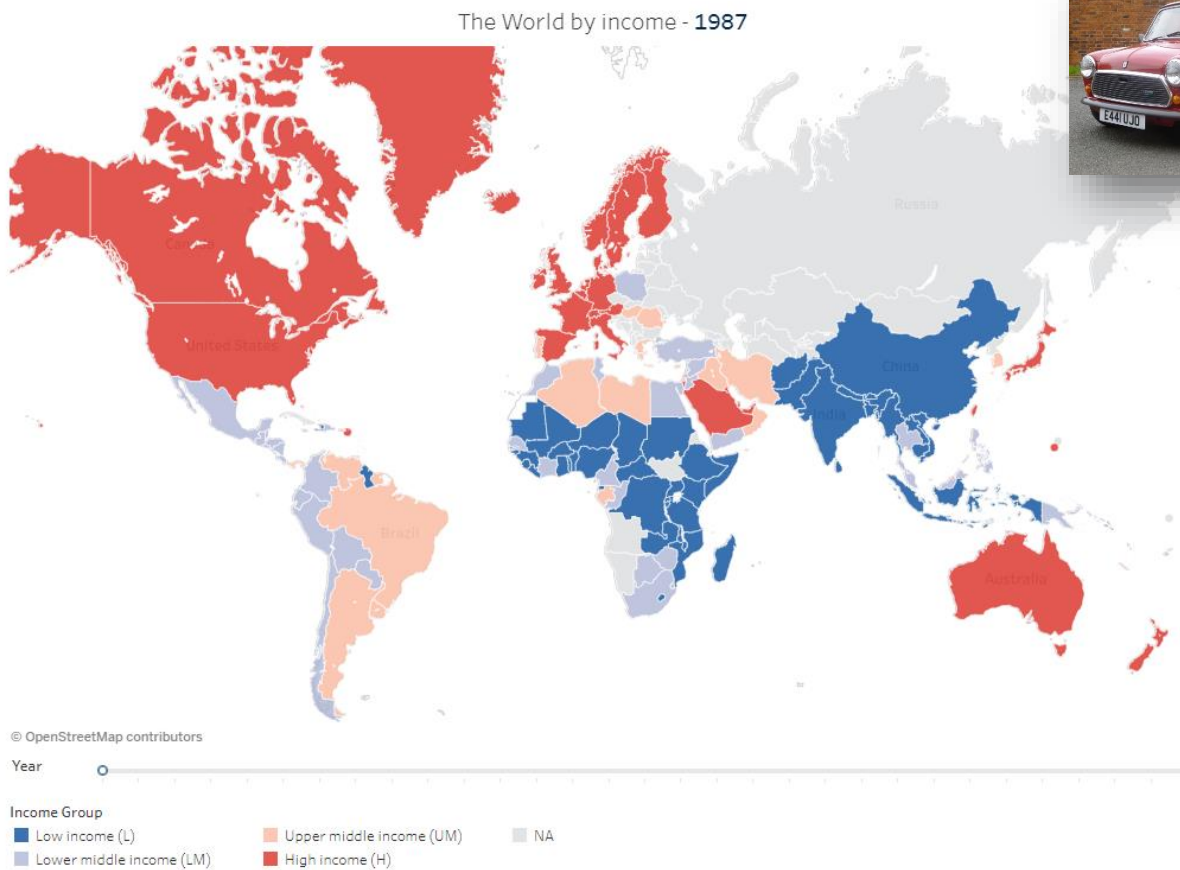
Name

IB DP Geography – Global Patterns & Classifications of Economic Development

Threshold	Value range \$ Today	GNI per Capita (\$)	Country Example (Guess)	Country Example (Correct)
Low-income				
Low-middle income				
Upper-middle income				
High income				

Task - Complete the table above using the table on ibgeographypods.

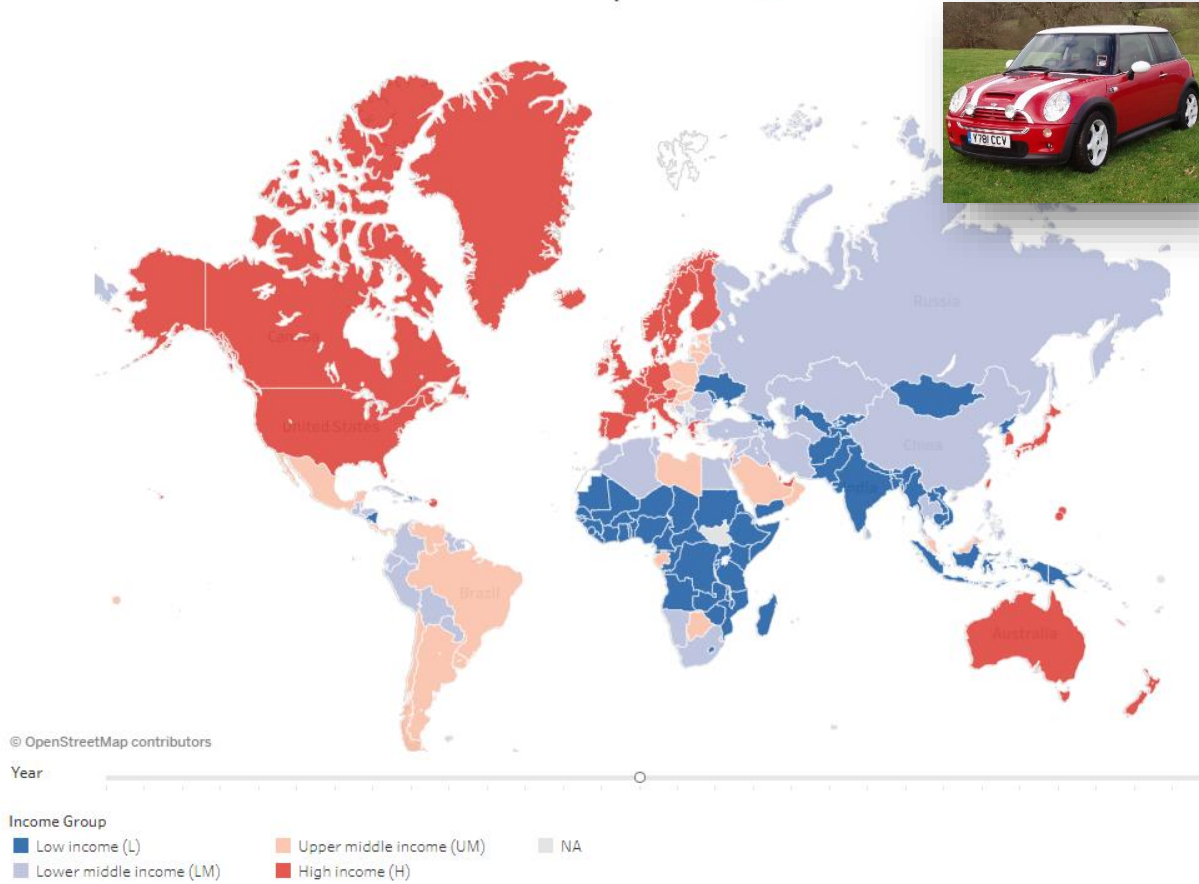
Task - Below you will see three maps tracing the pattern of economic development over time. The link to the interactive site where you can click on countries to find out their GNI per capita is on the website & correct your table above. Complete a piece of summary writing for each map in the space provided underneath.



Name

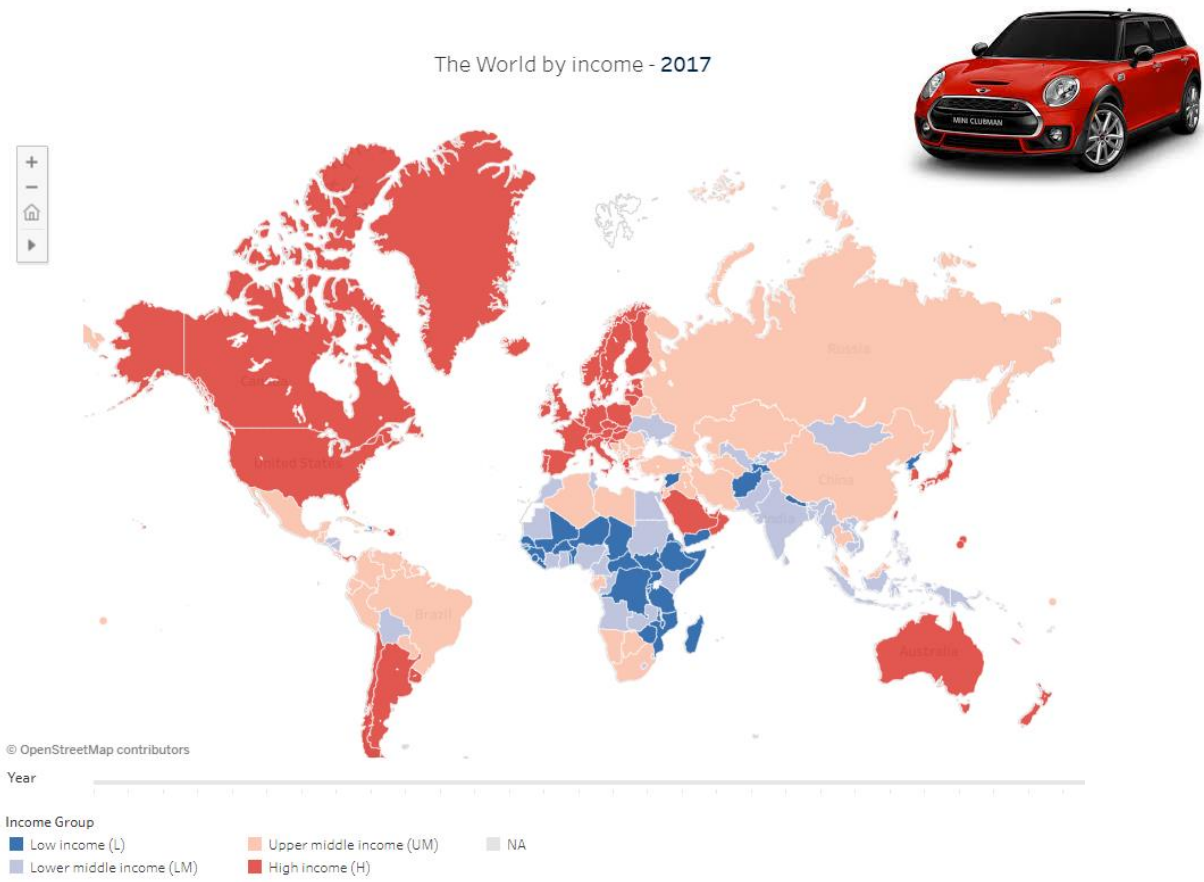
Summary of income distribution in 1987.

The World by income - 2001



Summary of income distribution in 2001 & changes from 1987.

Name



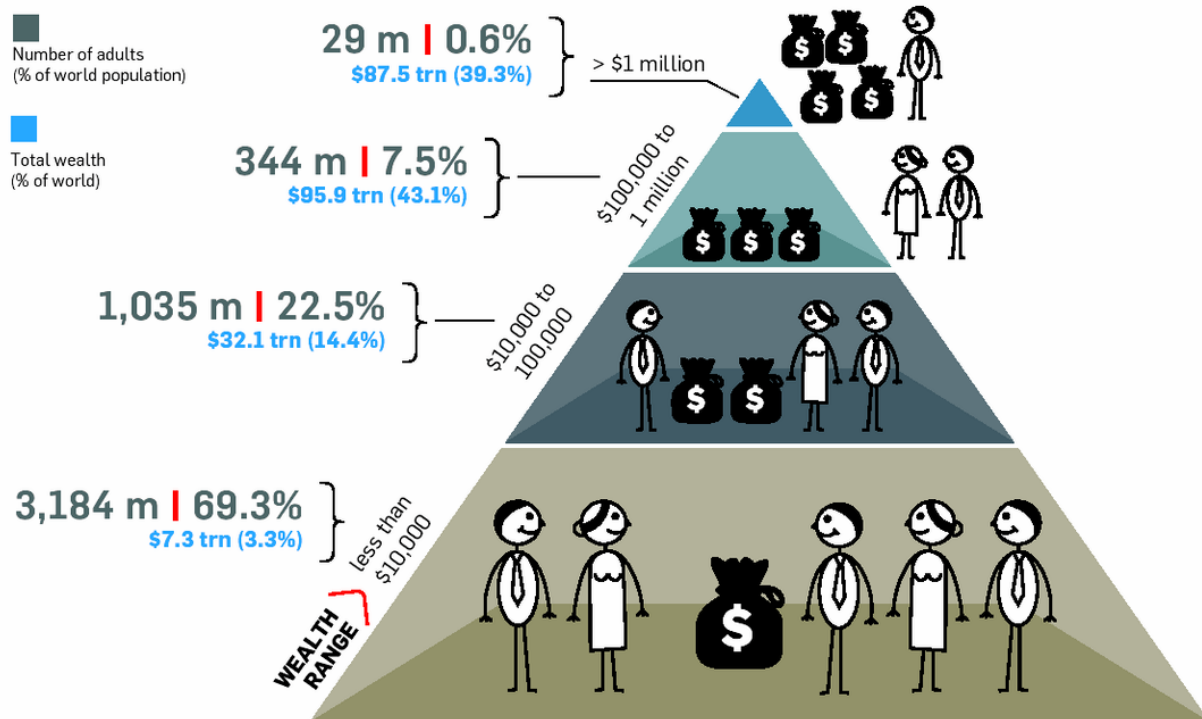
Summary of income distribution in 2017 & changes from 2001.

TOK talking point – Identify one problem with the World Bank maps above.

GNI per capita is measured by dividing the countries gross national income by its mid-year population. Give one drawback of using this unit when measuring development.

Name

While most of the world's population is at the bottom of the pyramid, the wealth is at the top. According to the global wealth report by Credit Suisse, India has around 1,550 ultra HNIs with at least \$50 million each, and 700 with at least \$100 million each.



Source: James Davies, Rodrigo Lluberias and Anthony Shorrocks, Credit Suisse Global Wealth Databook 2012

Study the infographic above and complete the following questions:

1. State the total wealth percentage shared by the richest percentage group on the infographic.
2. State the total combined wealth of the world.
3. Suggest one improvement to the infographic.