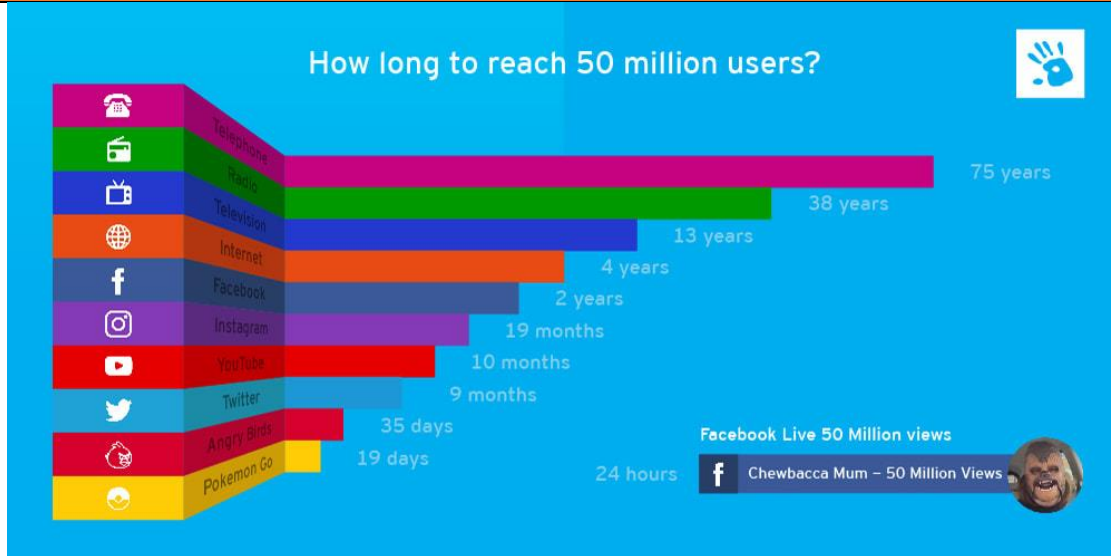
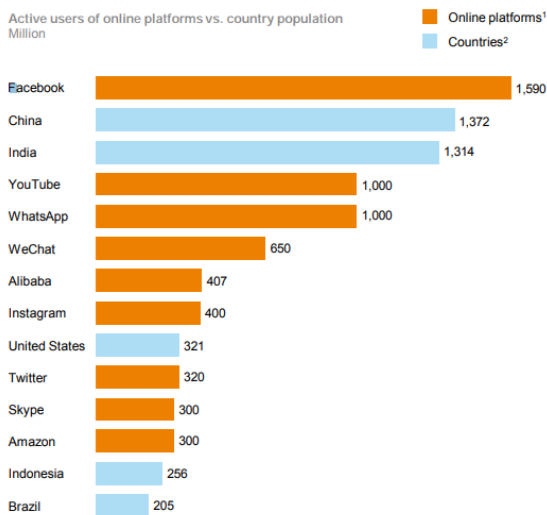


Name here

## IB DP Geography – Patterns & Trends in Communication Infrastructure



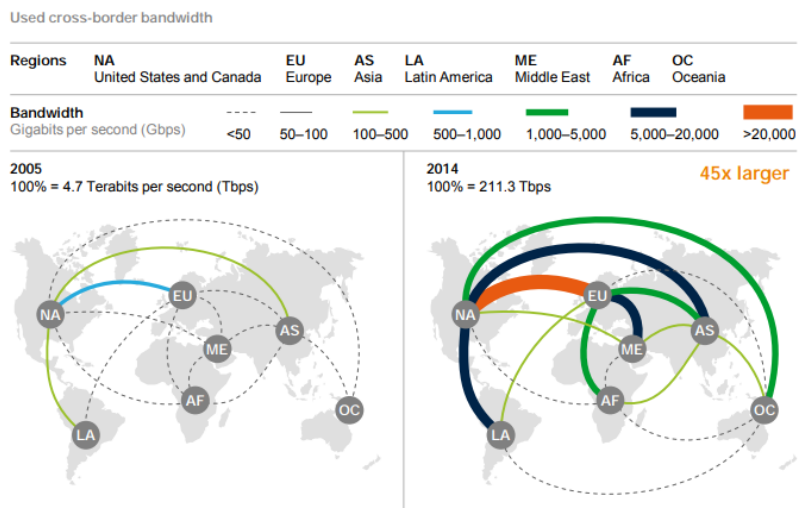
The biggest online platforms have user bases on par with the populations of the world's biggest countries



1 4Q15 or latest available.  
2 2015 population.

SOURCE: Facebook; Twitter; Alibaba; Fortune; Statista; Population Reference Bureau; McKinsey Global Institute analysis

Cross-border data flows are surging and connecting more countries



NOTE: Lines represent interregional bandwidth (e.g., between Europe and North America) but exclude intraregional cross-border bandwidth (e.g., connecting European nations with one another).

SOURCE: TeleGeography; Global Internet Geography; McKinsey Global Institute analysis

**Starter:** Comment on the trends shown in the charts above. Write a 50 word summary to describe the growth in global connectivity as well as the rise of social media and reaching the 50 million user mark.

Name here

<b>Task 1 – Study the six charts carefully on ibgeographypods. Collect the key data as set out below.</b>						
	<b>France</b>		<b>Brazil</b>		<b>Ethiopia</b>	
	<b>2001</b>	<b>Most recent</b>	<b>2001</b>	<b>Most recent</b>	<b>2001</b>	<b>Most recent</b>
Fixed Telephone Subscriptions / 100 people.						
Mobile Cellular Subscriptions / 100 people						
Individuals using internet % of population						
<b>Task 2 – Compare the quantity and quality of communication technology between the three countries above.</b>						
<b>Task 3 - What processes play a part in how technologically advanced these places are? (synthesis)</b>						